



# Wayne Woods Garden Club

FEBRUARY  
2020



[www.waynewoodsgardenclub.info](http://www.waynewoodsgardenclub.info)

## OFFICERS

### PRESIDENT

Nancy Cuttic

### VICE PRESIDENT

Anne McCrary

### RECORDING SECRETARY

Colleen Gassert

### CORRESPONDING SECRETARY

Kathy Liberato

### TREASURER

Mary Ann McGowan

## IN THIS ISSUE

Meals on Wheels	1
March Meeting	1
Native Plant Program	1
NGC Gardening School	2
Spring Trellis Workshop	2
District I Meeting	2
Birdhouse Workshop	2
In-House Flower Show	2
Jenkins Arboretum	2
Burpee Seed Packets	3
Skeleton Flower	3



## February Greetings

It's Mardi Gras! I hope you enjoyed some donuts today! We have many great opportunities this month to celebrate our anticipation of spring: The Philadelphia Flower Show starts this week, and Daylight Savings Time is on March 8. Remember to be on the look out to snap photos of anything violet for our June dinner slideshow. 🌸 *Nancy* 🌸

## MEALS ON WHEELS

Cupid and the MOW Committee sent some love to home-bound citizens in February. Lovely little Valentine arrangements were made at **Lee Carson's** and delivered to Bryn Mawr Hospital for distribution.



Paige Ryan, Nancy Morris, Mary Ann McGowan,  
Sue Stevens, Cathy Siple, Lee Carson



Paige, Cathy, MaryAnn, Donna Brody, Lee

## MARCH MEETING



At our March 4 meeting, we will have a birthday party to celebrate 65 years of Wayne Woods Garden Club with a hands-on activity of a floral cupcake arrangement. By now you should have emailed **Ellen McGarrigle** to reserve your materials to make the arrangement. Flowers, oasis and containers will be provided. Please bring your clippers and a box to take home your arrangement. Guest fee is \$10.

## NATIVE PLANT PROGRAM

Well known native plant advocate Doug Tallamy will speak on March 11, at 7:30 p.m., in the East Brandywine Township Building, 1214 Horseshoe Pike, Downingtown. Through his research, he demonstrates that "not all plants are created equal" when it comes to ecosystem services. Doug has a new book, Nature's Best Hope. Register online: [Smoser@ebrandwine.org](mailto:Smoser@ebrandwine.org)



## Common Mistakes for Growing Seeds Indoors

Surprisingly, growing seeds indoors and keeping them alive can be challenging. Avoid these common mistakes and you can greatly increase your odds of success.



### Starting Too Soon

Start seedlings 4 to 6 weeks before the last frost in your area.

### Not Enough Light

Seedlings need a lot of light. Consider using artificial light.

### Too Much or Too Little Water

1) Cover your container with plastic until the seeds germinate. 2) Water from the bottom. 3) Check wetness of soil at least once a day.

### Planting Too Deep

Rule of thumb is to plant seeds two or three times as deep as they are wide. This can be a challenge to figure out, but if you are not sure, err on the shallow side.

### Taking Plants Out Too Early

When your seedlings are about ready to go outside, you need to gradually prepare them for the wind and sun. Expose them to the outdoors more time every day over 6-10 days.

### Starting Too Many Seeds

Starting modestly is the way to go. Work on self-restraint in this area, particularly if you are a beginner. You can always do more direct planting in your outdoor containers when it gets warmer.

[www.thespruce.com](http://www.thespruce.com)

## NATIONAL GARDEN CLUBS, INC. GARDENING SCHOOL



The NGC Gardening School Series 13 Course 2 will be held on Wednesday, March 11 and Thursday, March 12, at 1756 Uwchlan Meeting House, 5 North Village Avenue in Exton. More information can be found at:

[http://nebula.wsimg.com/86597f6647e35bfc5d5ab73e3f4901f7?](http://nebula.wsimg.com/86597f6647e35bfc5d5ab73e3f4901f7?AccessKeyId=B52863DF757A6B203CBA&disposition=0&alloworigin=1)

[AccessKeyId=B52863DF757A6B203CBA&disposition=0&alloworigin=1](http://nebula.wsimg.com/86597f6647e35bfc5d5ab73e3f4901f7?AccessKeyId=B52863DF757A6B203CBA&disposition=0&alloworigin=1)

## SPRING TRELLIS WORKSHOP



The Spring Design Workshop, on March 30 at **Gwen Puglisi's** house, features a spring trellis arrangement that will utilize the container that was provided for our fall hands-on autumn arrangement. A sample and sign up will be available at the March meeting.

## DISTRICT I MEETING ON MARCH 31

Sign up at March meeting or contact **Nancy** (ncuttic@comcast.net) by March 24.

### DISTRICT I MEETING

**TUESDAY, MARCH 31, 2020**

**CROW'S NEST PRESERVE\***

**201 PIERSOL ROAD**

**ELVERSON, PA 19520**

**10 a.m. Business Meeting**

**11 a.m. Program: Why Native Plants Matter**

**Our program will be provided by  
Dan Barringer, Preserve Manager**

**RSVP to your Club President before March 24<sup>th</sup>**

**\*Note: please check directions ahead of time, GPS does not always work in rural areas**

## REPURPOSED BIRDHOUSE WORKSHOP

Please remember to bring your donations of flat-backed stones, trinkets, corks, old jewelry, etc., for the repurposed birdhouse workshop that will take place on April 4 at **Laura Furman's** house.



## MAY MEETING IN-HOUSE FLOWER SHOW



The May 6 meeting will be a flower show with categories related to "Celebrations." Schedules and information will be available at the March meeting. Remember to look out for your challenge bulbs that might be poking through earlier than normal due to the mild winter. Also, if you took home a challenge plant, hopefully it is thriving and almost ready to be seen. We will receive feedback from federated judge, Sandy Manthorpe.

## JENKINS ARBORETUM

Check out the details of upcoming interesting programs and events at Jenkins <https://www.jenkinsarboretum.org/>

**Dealing with Climate Change in Your Landscape** - Sunday, March 15, 2 - 3:30 p.m.

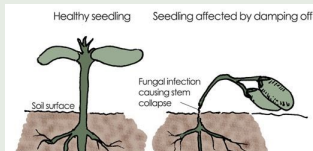
**A Tree Grows in Brooklyn and Everywhere Else** - Thursday, March 19, 7 - 8:30 p.m.

**Gardening in Deer Country** - Sunday, March 22, 2 - 3 p.m.

**9th Annual Visitors' Photography Exhibition** - Saturday, February 15 through Sunday, March 29.

## Danger to Indoor Seedlings

**Damping Off Disease** is a very common plant disease, fatal to young seedlings.



### Identify the Disease

Seedlings, which were previously healthy, fall over right at the soil level. You might not see the fungus at first, but as the disease progresses, the white, cottony fungus is clearly visible on top of the soil.

### Causes of the Disease

The disease is an airborne plant disease, and can spread very quickly from one seed tray to another.

### Control Damping Off Disease

- Buy sterilized seed-starting soil
- Use clean, sterilized containers
- Provide plenty of air circulation
- Don't overwater
- Don't fertilize new seedlings. Nitrogen can promote rapid growth of the disease.
- Don't use tray covers. The increase in humidity level encourages disease growth.

[www.gardenersnet.com](http://www.gardenersnet.com)

## FREE BURPEE SEED PACKETS

Burpee is generously offering seed packets to members of GCFP; however, there is some accountability involved. They will need the name and email address of each person who takes seeds so that they can follow up to see how successful the seeds are. They will ask for pictures and feedback.

Please let me know, by **Friday, February 28** (ncuttic@comcast.net) if you would like any of the following packets and indicate how many packets you would like:

Arugula, Rocket	Morning Glory, Sunrise Serenade
Basil, Spicy Saber	Pepper, Hot, Pepperoncini Orange
Bean, Garden, Fantastic Filet	Pepper, Sweet, California Wonder
Carrot, Short 'n Sweet	Radish, Crimson Giant
Cucumber, Bush Champion	Rosemary
Cucumber, Chompers Hybrid	Sunflower, Santa Lucia
Cucumber, Picklebush	Thyme
Echinacea, Purple & White Coneflower Mix	Tomato, Brandywine Red
Lettuce, Black Seeded Simpson	Tomato, Fourth of July Hybrid
Marigold, Burpee's Best Mixed Colors	Zinnia, Giant Flowered Mixed Colors

Seeds will be available for pickup at the April 2 joint meeting at the Radnor Library. If you will not be present, please make arrangements for someone to get your packets for you.

## HAVE YOU EVER SEEN THIS?

The Skeleton Flower's petals become translucent when it rains! *Diphylleia* is a group of small herbs in the family Berberidaceae described as a genus in 1803. It is native to the eastern United States and eastern Asia. *Diphylleia grayi*, also known as the skeleton flower, has white petals that turn translucent with rain. When dry, they revert to white.



## PLANNING AHEAD

March	1-8	Philadelphia Flower Show: Riviera Holiday
	4	Business Meeting and Floral Cupcake Hands-On Design Activity
	11	Doug Tallamy, 7:30 p.m., Downingtown
	11 - 12	NGC Gardening School
	30	Design Workshop: Spring Trellis, 7 p.m. at Gwen Puglisi's House
	31	District I Meeting, Crow's Nest Preserve, Elverson
April	2	Joint Meeting with Community Garden Club of Wayne
	4	Repurposed Birdhouse Workshop, 11 a.m., Laura Furman's House

